

Montaidh agus am pàrtaidh



Diana Bentley • David Melling



Co-là-breith sona!

Seo Montaidh.

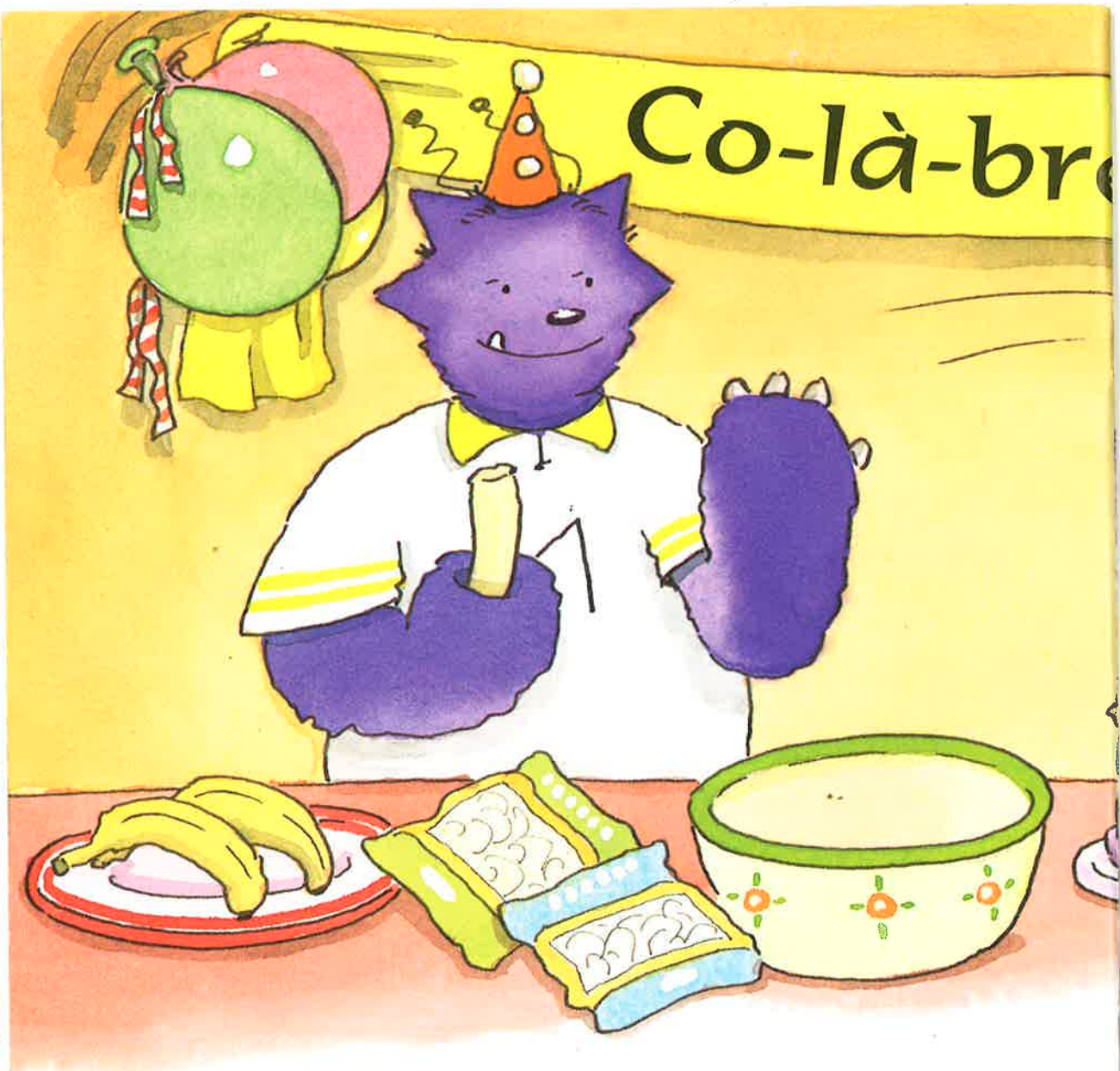
'S e uilebheist mòr tapaidh a th' ann.

Seo Tofaidh, a charaid.

Tha Tofaidh laghach.

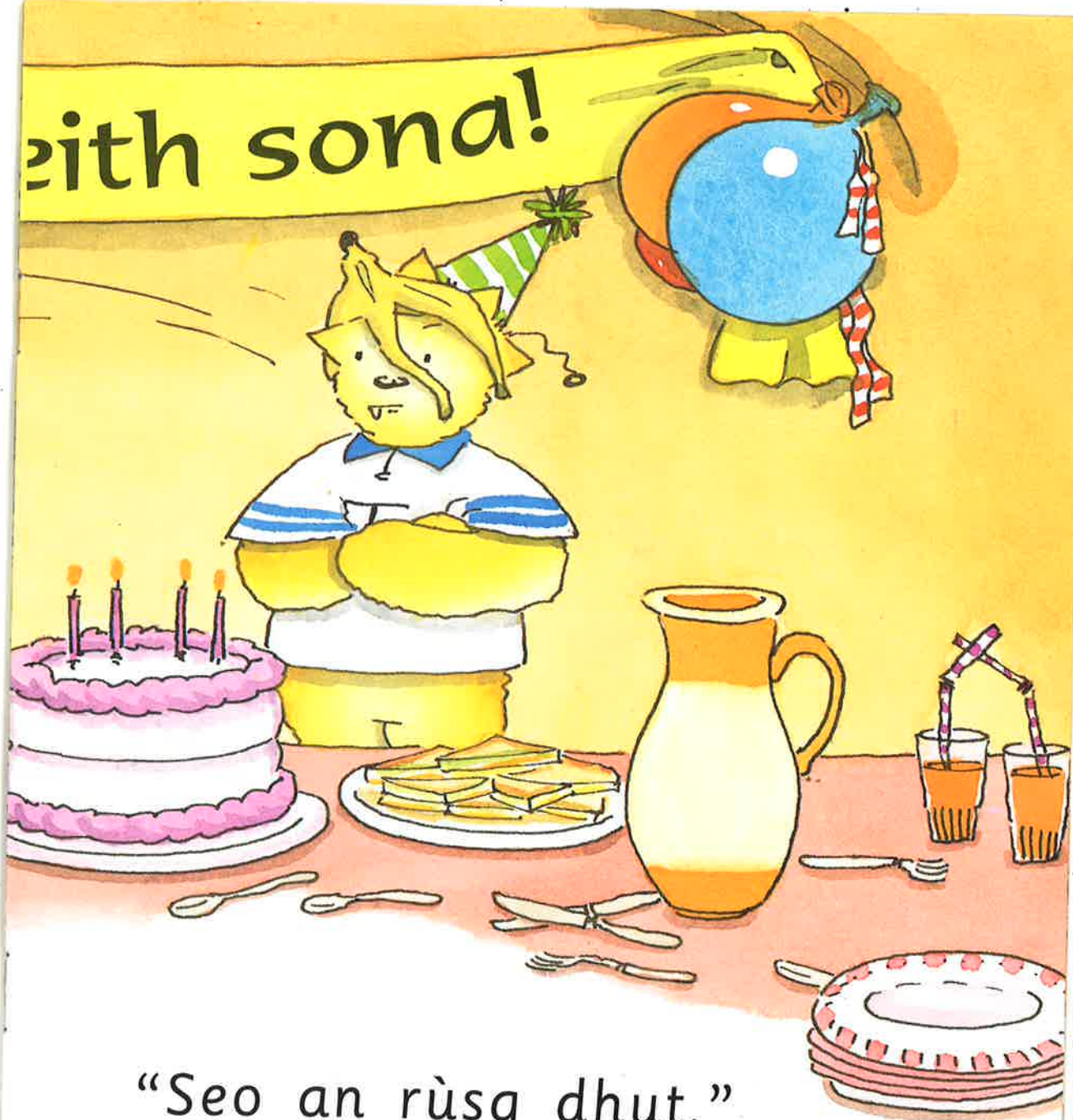
'S e an co-là-breith aig Tofaidh a bh' ann.

Rinn iad pàrtaidh.



“Is toil leam banana,”
thuirt Montaidh.

zith sona!

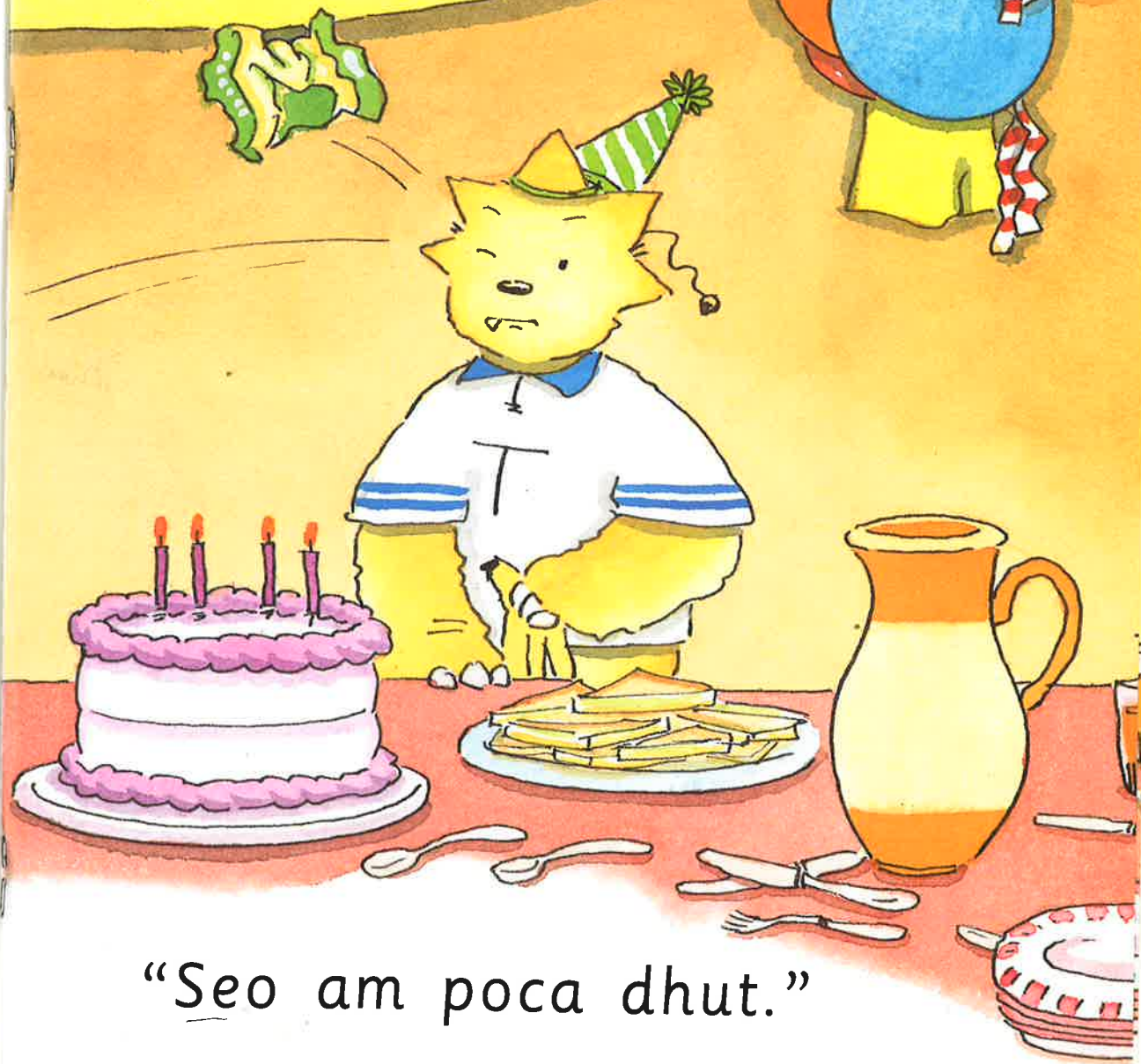


“Seo an rùsg dhut.”

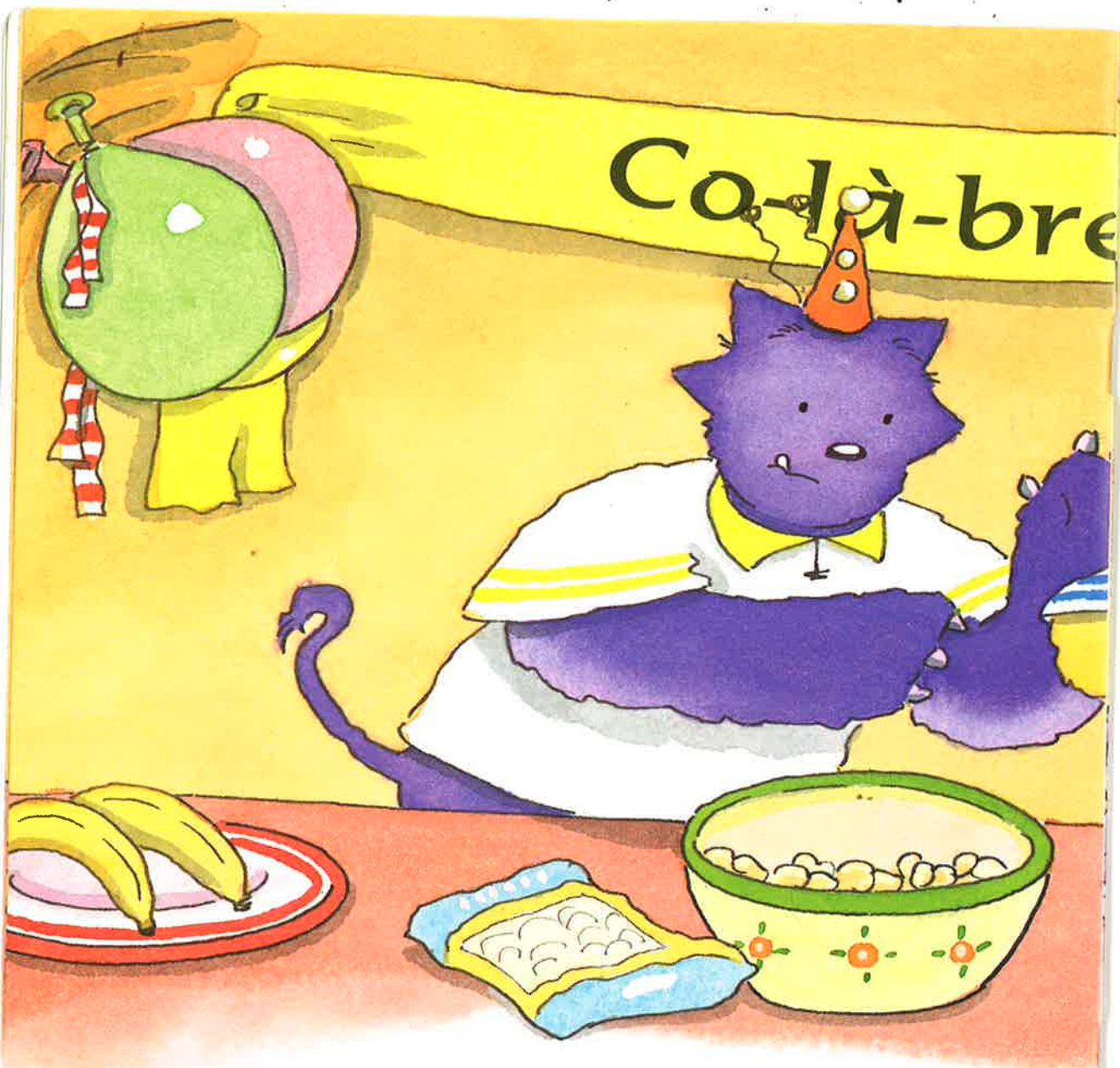


“Is toil leam criospan,”
thuir Montaidh.

with sona!

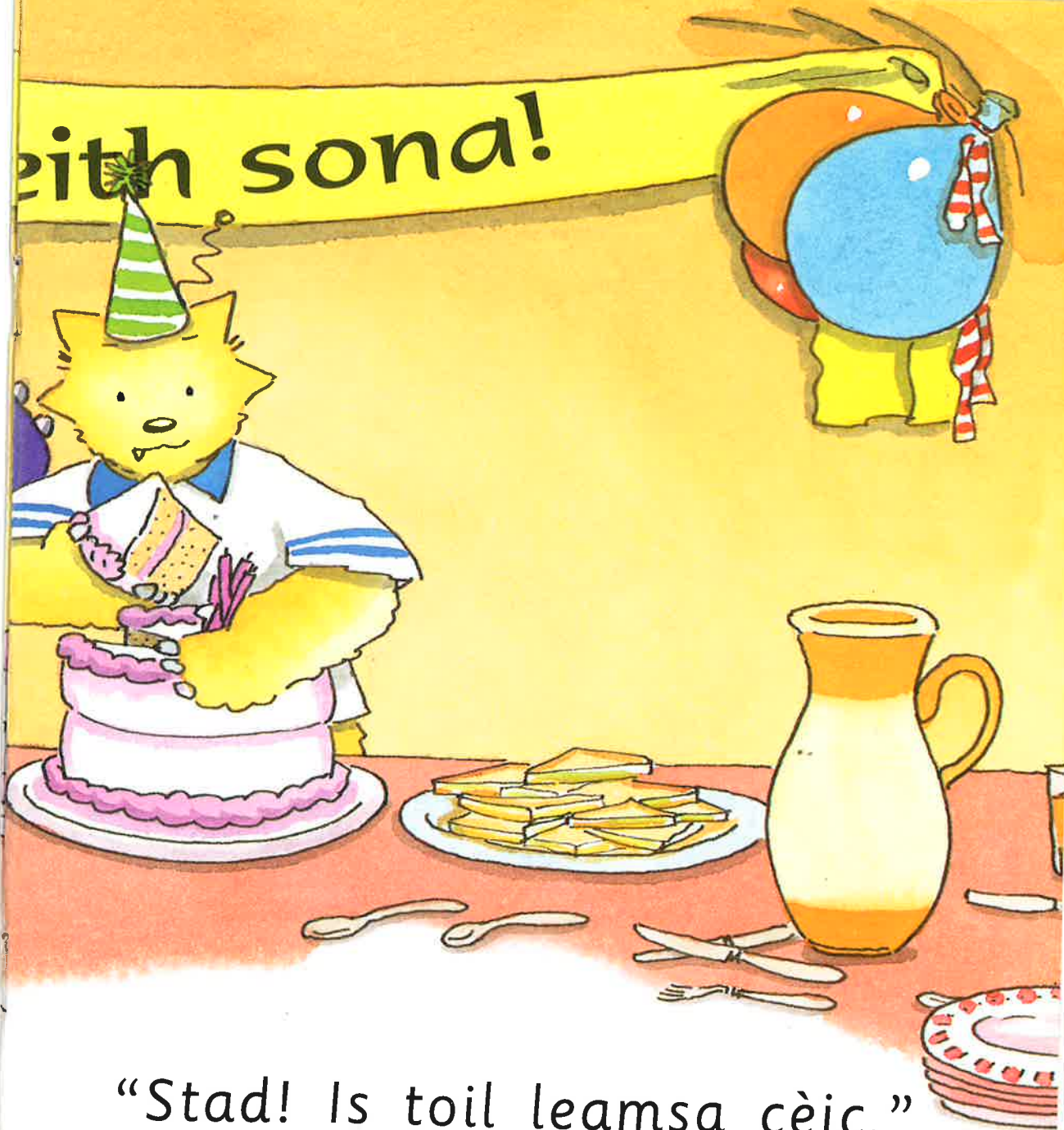


“Seo am poca dhut.”



“Is toil leam cèic,”
thuirt Montaidh.

...eith sona!



“Stad! Is toil leamsa cèic,”
thuirt Tofaidh.

eith sona!



“Seo na coinnlean dhut!”
thuirt Tofaidh.